



Launch Pad v2.2

Introduction

[What is Launch Pad v2.2](#)

[Installation](#)

[Copyright and Disclaimer of Liability](#)

[History](#)

Procedures

[Button Setup](#)

[Choosing Button Icon](#)

[Menu Commands](#)

[Moving Button Assignment](#)

[Removing Button Assignment](#)

[Setting Launch Pad v2.2 Options](#)

What is Launch Pad v2.2



Launch Pad v2.2 is a palette of 24 buttons you define to launch applications. You can assign either an executable file or a data file. If you assign a data file, **Launch Pad v2.2** will launch the application associated with the data file. I've made the program as configurable and as intuitive as possible. If you feel that this and that should be like this or this and that should be added, let me hear about it and I may add/alter the program and release another version.

Launch Pad v2.2 was inspired by a program by Jeff Franks called **Icon Palette**.

Installation

Distribution Files:

- LP_PAD.EXE The main executable. You can put this file in any directory you wish.
- LP_PAD.HLP The help file. You must put this file in the same directory as LP_PAD.EXE
- GTCMD.VBX Custom buttons extension library. Place this file in the same directory as LP_PAD.EXE.
- DLGSLIB.DLL Dialogs extension library. Place this file in the same directory as LP_PAD.EXE.
- GTLAUNCH.DLL Dynamic link library used in Launch Pad v2.2 Place this file in the same directory as LP_PAD.EXE
- CTL3D.DLL 3D dynamic link library. Place this file in your \windows\system directory. Please check to make sure you don't have a file of the same name in your \windows\system directory. If you do, check its date and make sure it's not newer than the file in this distribution. Either way, it's a good idea to make a backup of that file before copying over it.

File Not Included But Required:

- VBRUN300.DLL Although this file is needed to run the program, it is not included in the package to reduce its size. If you don't have this file in your system (check your \windows or \windows\system directory) you can download it from the site where you acquired this program. If not, write the author and he'll be happy to send you a copy.

Copyright and Disclaimer of Liability

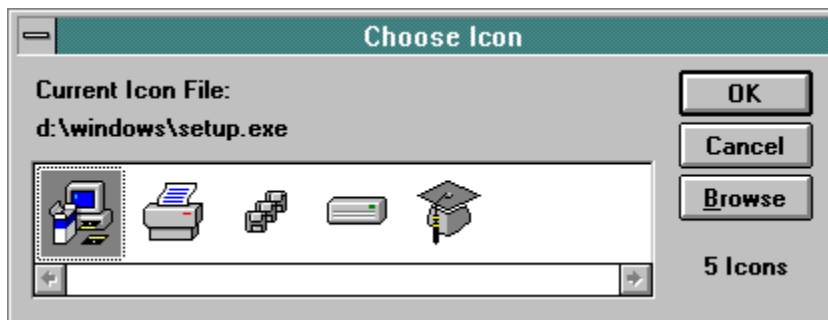
Launch Pad v2.2 is copyright ©1993-1994 of George Rallos Torralba. Portions of the software is copyright of **Microsoft** Corporation.

The author George Rallos Torralba will not be responsible for damages, direct or consequential, from the use of this software. If you use this software, you are hereby bound by the aforementioned disclaimer. Use it at your own risk.

If you find bugs, which is highly likely, or just want to make comments or suggestions, please feel free to contact the author at:

Email: grtorlba@seattleu.edu (preferred)
US Mail: 8728 Phinney Avenue N #8
Seattle, WA 98103
(206) 781-7622

Choosing Button Icon

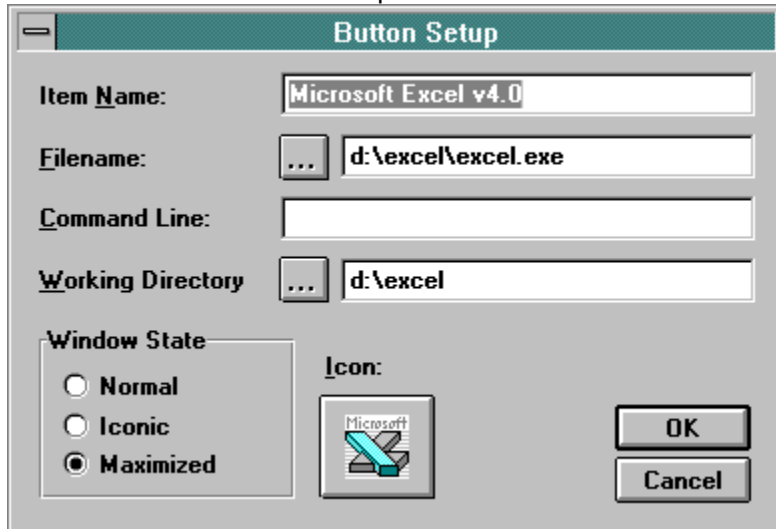


Select an icon from the viewport and choose OK. To use an icon from another file, use the browse command to select the file to use.

Button Setup

To access the Button Setup dialog, click the right mouse button on the button you want to configure.

Click on a field for a description



The image shows a 'Button Setup' dialog box with the following fields and options:

- Item Name:** Microsoft Excel v4.0
- Filename:** d:\excel\excel.exe
- Command Line:** (empty)
- Working Directory:** d:\excel
- Window State:** Radio buttons for Normal, Iconic, and Maximized. Maximized is selected.
- Icon:** Microsoft Excel icon.
- Buttons:** OK and Cancel.

Item name

This name is displayed when the mouse pointer is over a button.

Filename

Enter the full path of the executable (.exe) file or a data file. Use the Browse button to facilitate selecting a file.

Command Line

Any additional parameter you need to pass to the executable upon execution.

Working Directory

The application will be started with the path entered here as the current directory. Use the Browse button to facilitate selecting a file.

Window State:

Normal	The application launched will determine the state of its window upon startup
Iconic	The application will be launched with its window minimized.
Maximized	The application will be launched with its window maximized.

Icon Button

Use the Icon button to choose a different icon than what **Launch Pad v2.2** initially chooses.

See also: [Choosing Button Icon.](#)

Menu Commands

Click on a menu command for specific help.

<u>O</u> ptions...
<u>R</u> n...
Sy <u>s</u> tem <u>I</u> nfo...
<u>A</u> bout Launch Pad...
<u>E</u> xit
<u>E</u> xit Windows
<u>R</u> estart Windows

To access **Launch Pad v2.2**'s menu, click on your right mouse button anywhere outside the button grid but within **Launch Pad v2.2**'s window.

Moving Button Assignment

To move a button assignment to another button, hold down the Control key on your keyboard, click and hold the left mouse button, then drag and drop the icon to the new button. While dragging a button assignment, the mouse pointer will change to a black and white representation of the button's icon.

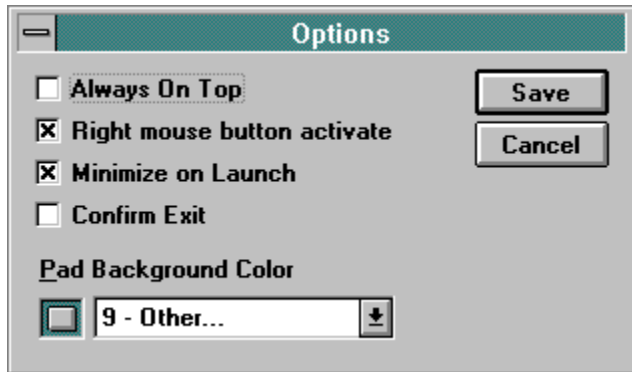
Removing Button Assignment

To clear a button, hold down the Control key on your keyboard, click and hold the left mouse button then drag and drop the icon outside of the button grid but within the **Launch Pad v2.2** window. The mouse pointer will change into a trash can to indicate the valid trash area.

Setting Launch Pad v2.2 Options

To setup **Launch Pad v2.2**'s options, choose the Options item in **Launch Pad v2.2**'s popup menu.

Click on a field for a description



Minimize on Launch

If this checkbox is selected, **Launch Pad v2.2** will minimize its window after launching an application. (*Recommended*)

Right Mouse Button Activate

This option allows you to switch instantly to **Launch Pad** from anywhere by clicking on the *right* mouse button on any non-client area of any window. Examples of non-client areas of a window are the title bar, the minimize, maximize, and restore buttons, scroll bars, etc. If you hold down the Control key on your keyboard while clicking the right mouse button while this option is selected, **Launch Pad** will bring up Windows **TaskManager** instead. Clicking the right mouse button in any non-client area of **Launch Pad** will also do the same.
(*Recommended*)

Confirm Exit

If this checkbox is selected, you will be asked confirmation upon exiting **Launch Pad v2.2**.

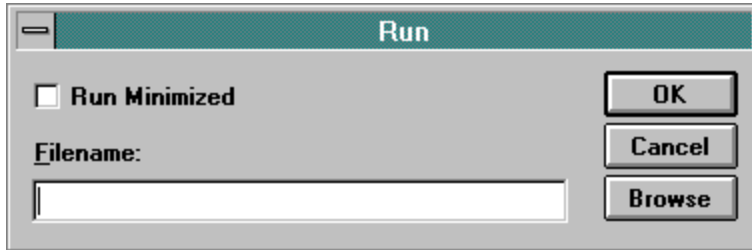
Always On Top

Select this checkbox to keep **Launch Pad v2.2**'s window visible over all windows open on the desktop.

Pad Background Color

Allows you to change the background color of the button grid.

Run Menu Command



The Run menu command brings up the Run dialog box as pictured above. Enter in the text box the full path of the executable to run or a data file to launch. Use the Browse button to select a file.

System Information

Displays a dialog box of selected system information, e.g., memory and resources.

About Launch Pad v2.2

Displays a dialog box about **Launch Pad v2.2**.

Exit

Quits **Launch Pad v2.2.**

Exit Windows Menu Command

Allows you to exit the current Windows session. This command will prompt for confirmation.

Restart Windows Menu Command

Allows you to restart the current Windows session. This command will prompt for confirmation.

Browse Button (Button Setup)



The browse button brings up a dialog where you can facilitate selecting a file or directory, depending on context.

History

- Version 2.1
 - Added History list
 - Fixed resource leaks.
 - Optimized/rewrote some code to make it more efficient. This is usually an ongoing process as the author gains more experience and learns some new tricks.
 - Starting with this release, the files will not be named with the version number.
- Version 2.2
 - Fixed other resource leaks.
 - Move dialog boxes from VBXs to DLLs enabling faster access and lesser code.
 - Some minor cosmetic changes in some dialog boxes.
 - Made the Filename field in the Button Setup dialog read-only. This was necessary to make updating of the Icon button in the Setup dialog seamless and clean.
 - Fixed the saved-position code so it will save the Window's normal position when minimized instead of the minimized position.

